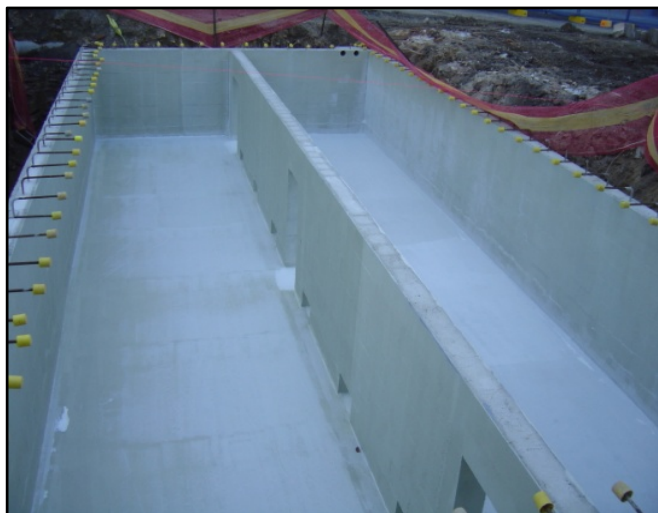


LATEX CEMENT LIQUID MEMBRANE

www.gripset.com

TECHNICAL DATA SHEET

techenquiries@gripset.com



Description

Gripset 2P is a two component latex cementitious membrane designed for a range of waterproofing applications including wet areas, showers, podiums, terraces, balconies, immersed and subterranean areas.

Developed by advanced polymer technology, Gripset 2P possesses fast drying and high adhesion properties. Suitable for use over a range of substrates, Gripset 2P provides a unique durable membrane while maintaining flexible and permanent waterproofing properties. Outstanding bonding properties are achieved to surface finishes such as renders, screeds, and tile adhesives. Suitable for cool or humid environments to enable tiling after 24 hours.

Compliant to AS/NZS 4858:2004, Gripset 2P holds CSIRO Technical Assessment No. 347, satisfying the requirements of AS3740 "Waterproofing Wet Areas in Residential Buildings".

Gripset 2P is also certified to AS/NZ 4020 – 2005 for potable water storage, making Gripset 2P a highly versatile membrane option for residential, commercial and industrial applications.

Features & Benefits

- * Water based, free of solvents, non toxic and non flammable
- * Waterproof, withstanding continuously wet and immersed environments
- * Excellent adhesion to surfaces
- * Fast curing
- * Flexible, accommodating normal substrate movement from building surfaces.
- * Excellent bonding properties for renders, screeds, tile adhesives and toppings
- * Durable and tough
- * Can be applied by brush or roller on horizontal and vertical surfaces without sagging
- * Low odour and free of dangerous fumes in warm and/or confined areas.

Application

- * Gripset 2P is suitable for commercial, industrial and residential applications.

Waterproofing Uses

- * Internal wet areas, bathrooms, laundries and tiled areas
- * Balconies, decks, podiums, terrace floors
- * Parapet and feature walls
- * Water features, swimming pools
- * Potable water storage facilities, retention tanks and general water tank areas
- * Planters, retaining walls, earth shelters
- * General tiled areas to prevent moisture ingress

Substrates

Substrates suitable for bonding Gripset 2P over include:

- * Concrete, render and masonry
- * Fibre cement sheeting, plasterboard and structural sheeting
- * Wet area timber sheeting and external grade plywood
- * Aerated concrete panels and blocks

For further information on suitable surfaces and substrates contact technical department of Gripset Industries for correct advice on surface preparation and suitability.

Surface Preparation

Surfaces must be prepared thoroughly before commencing application. All substrates must be structurally sound, stable, dry, and clean, with substrate compressive strength a minimum 25MPa and cohesive strength a minimum 1.5MPa. Smooth shiny surfaces to be roughened or etched. Rough surfaces are to be evened or filled first (refer to Gripset 11Y). Building surfaces must be constructed to manufacturer's recommendations and relevant building standards in force at time of membrane application. All surfaces are to be free of sharp protruding surfaces, loose material, de-bonded coatings, curing membranes/agents, release agents, wax residues, foreign particles, laitance, algae and moss, grime, oils, animal fats or grease remains.

Structurally unsound layers and surface contaminants are to be mechanically removed by abrasive blasting, blast tracking, grinding or equivalent methods. For thorough surface preparation, refer to Gripset SC (algae and moss remover) and Gripset DG (water based oil degreaser) products.

Priming

Gripset 2P membrane must be applied onto primed surfaces:

Gripset GP primer – for general porous vertical and horizontal building surfaces. Brush or roller apply primer to total surface area at a minimum coverage of 1 litre per 6m² and allow drying for 30 minutes or once wet film dries to a clear transparent coating.

Gripset OP primer – for non porous, smooth and dense surfaces. Brush or roller apply primer to total surface area at a minimum coverage of 1 litre per 12m² and allow to dry for 1 hour

Gripset 11Y slurry – for immersed areas, subterranean, asphalt/bitumen surfaces and existing coatings. Mix Gripset 11Y in equal volumes to the following ratios: 1 part Gripset 11Y + 1 part Portland cement + 1 part fine wash sand, mix to form homogenous slurry. Brush apply to substrate at coverage of 1 litre per 3m². Membrane is to be applied over primer slurry while primer is in a damp/wet state, i.e. "wet on wet" application

Gripset P10 primer – for surfaces with residual or rising damp. Apply by brush or roller in 2 coats at a minimum coverage of 1 litre per 3m², ensuring subsequent coat is applied in opposite direction to the first coat. Allow to dry for a minimum 24 hours before applying membrane. Primer must be tack free before applying membrane.

Note: Refer to data sheets for above primers before using

LATEX CEMENT LIQUID MEMBRANE

www.gripset.com

TECHNICAL DATA SHEET

techenquiries@gripset.com

Detailing

All critical areas such as joints, junctions, movement zones, penetrations and drainage points are to be correctly sealed and detailed prior to membrane application.

Voids, gaps and undulating surfaces:	Filled and evened with Gripset 11Y repair mortar compound.
Cracks up to 1mm:	Filled with Gripset SB, followed by Gripset RF reinforcement
Cracks >1mm:	Elastoproof Joint Band
Bond Breaker:	Elastoproof Joint Band to wall/floor junctions and wall/wall junctions.
Movement or Expansion Joints:	Elastoproof Joint Band
Penetrations, Pipes, Drain outlets:	Elastoproof Collars

Membrane Application

Mixing

Gripset 2P consists of a 10litres liquid component and a 15kg dry powder component. Membrane is formed by mixing 15kg Gripset 2P powder to 10litres Gripset 2P liquid.

To mix smaller quantities, measure on parts by volume, mix 1:1 liquid to dry powder.

When mixing, slowly add the dry powder component to the liquid, ensuring the mixing of components is continuous while the powder is added. Using an electric/mechanical stirrer with a paddle attachment at a slow-medium speed, mix the dry component until it is evenly dispersed into the liquid and lump free.

Allow the mix to settle for 3-5 minutes then re-stir before use. Pot life once mixed is 60-75 minutes; however this may be reduced in warmer weather.

General

The application of Gripset 2P must comply with AS3740. Product is to be applied in a minimum of 2 coats at a total minimum coverage of 1.5 litres/m²; forming a minimum dried film thickness of approximately 1.2mm. For immersed applications a total minimum coverage of 2litres/m²; forming a minimum dried film thickness of approximately 1.6mm. Apply subsequent coats at different directions to the previous coat. Coverage is dependent upon surface condition and will vary accordingly as uneven and porous surfaces will require greater coverage to achieve the specified film thickness. Product can be applied by roller or brush.

Installing Elastoproof Bond breaker Joint Band

Measure and cut Elastoproof Joint Band for all wall/floor junction areas. Apply first coat of Gripset 2P membrane to approximately 150mm extending up walls and on to floors, and embed Elastoproof Joint Band into wet bed of liquid membrane, ensuring fabric edges are fully wet out and no air bubbles exist behind the fabric. Rear rubber section of Elastoproof Joint Band is not bonded to substrates. At sections where Joint Band is to be joined, a minimum 50mm overlap is required. Elastoproof Prefabricated Corners are available for both internal (90°) and external (270°) junctions, enabling Joint Band to overlap and avoid joint at critical areas. If Prefabricated corners are not used, Elastoproof Joint Band is to have bottom leg cut and folded; ensuring fabric is completely bonded with Gripset 2P membrane.

For floor pipes protruding floors, Elastoproof Collars are to be fitted over the neck of the pipe, embedding fabric edges into wet bed of Gripset 2P membrane. For floor wastes that are finished level with the floor, Elastoproof Inverted Collars are to be fitted or alternatively the Gripset 2P membrane with Gripset RF Fabric embedded is to be dressed down into the waste outlet at a minimum 50mm.

Once Elastoproof Joint Band is in place, apply Gripset 2P membrane to the total floor area and to walls at 150mm high in general wet areas and balcony decks, and at 1.8m high in shower alcoves. A continuous seamless membrane should be the final finish to the total area upon completion of the waterproofing membrane application.

Tiling & Surface Toppings

It is recommended when tiling directly over Gripset 2P in internal and external floor areas, that Gripset C-Flex, Gripset C-Bond or Gripset C-Set tile adhesives be used.

In immersed areas tile directly over Gripset 2P with Gripset C-Set tile adhesive.

If applying a screed, render or concrete topping over Gripset 2P it is recommended to incorporate Gripset 11Y as a proprietary bonding agent and water resistant additive.

For use of other adhesives over Gripset 2P contact the technical department of Gripset Industries for detail of compatibility.

Pre mixed tile adhesives are not recommended to be used over Gripset 2P.

Drying time before tiling is 24 hours.

Note: All tiling is to be carried out to AS3958.1 – 2007 “A Guide To The Installation of Ceramic Tiles”

Storage conditions

- * Best stored at room temperature.
- * Avoid cold freezing conditions and off concrete floors.
- * Do not store in direct sunlight.
- * Shelf life: Liquid component is 12 months; powder component is 6 months in original unopened packaging.

Packaging

- * Liquid Component – 10 litres (in a 20 litre pail); 200 litre drums
- * Dry Powder Component – 15kg bag

Precautions

- * Not to be used as a trafficable surface
- * Do not apply to areas when rain is imminent
- * Do not apply when surface temperature is below 5°C or above 30°C
- * Not to be applied over glass or glazed surfaces
- * Not designed as a sealant for expansion or control joints
- * Not to be used in areas where solvent or petroleum based products may be spilled
- * Not to be used in areas subject to negative hydrostatic pressure
- * All finish coatings over this membrane must be water based and solvent free
- * Allow minimum 72 hours drying after final application if treated area is to be flood tested
- * Material Safety Data sheet (**MSDS**) available
- * For further information contact technical department of Gripset Industries

Clean up

- * In water while wet.
- * Once dried product needs to be removed mechanically

LATEX CEMENT LIQUID MEMBRANE

www.gripset.com

TECHNICAL DATA SHEET

techenquiries@gripset.com

Technical Data

Appearance	Liquid – white; Dry – light grey
Form	When mixed – off white viscous paste When dried – grey/olive appearance
Drying <small>Based on normal ambient temperatures of 20°C *Temperature, humidity and porosity will vary dry times</small>	Tack Free: 45-50 minutes Re-coat: 2-4 hours Dry film – 8-10 hours Tiling or toppings over: 24 hours Flood test: 72 hours curing Immersion: 21 days
Mixing ratio	1 parts liquid: 1 parts dry (by volume)
Total Yield (mixed)	
Specific gravity of mixed product	1.25kg/litre
Shore A hardness (ASTM D2240-97)	92

Durability test results for AS/NZ 4858 – 2004:	
Elongation classification	239% - Class 2
Tensile Strength	1MPa
Water Immersion test – 56 days	PASS
Bleach Immersion Test – 56 days	PASS
Detergent Immersion Test – 56 days	PASS
Heat Ageing	PASS
Cyclic Movement Test	PASS
Water Absorption Test	PASS
Vapour Transmission Test	0.22g/24h/m2

Potable Water Storage Approval - AS/NZ 4020 - 2005	Certified
VOC Content – Part A Liquid (ISO 13741-1)	0.035g/litre
The VOC Content of Gripset 2P is below the maximum VOC Content for Architectural and Interior Sealants as required by Green Star Ratings tools Education v1, Healthcare v1, Industrial v1, Multi Unit Residential v1, Office Interiors v1.1, Office Design v2, Office v3, Office As Built v2 and Retail Centre v1	

Notes

It is recommended before commencing the application; that adhesion of products to be used (e.g. primers, membranes, coatings adhesives etc) is tested over a typical area of the prepared surface to ensure satisfactory adhesion. It is the responsibility of the applicator to carry this out and accept the substrate suitability before any application starts. Gripset Industries offers a service for pre testing adhesion to surfaces for large commercial areas or unusual substrates. For further details contact Gripset Industries.

Details contained in product data sheets are general. For any situation or items not covered in this data sheet, it is the responsibility of the applicator to check with Gripset Technical Services before commencing the application. A written confirmation will then be issued by Gripset Technical Services.

Gripset Industries Pty Ltd

ABN: 64 137 930 093

Telephone: +61 (8) 8124-7300 or 1800 650 435

Email: techenquiries@gripset.com

Website: www.gripset.com

Product Disclaimer

This Product Data Sheet (PDS) summarises our best knowledge of the product, including how to use and apply the product based on the information available at the time. You should read this PDS carefully and consider the information in the context of how the product will be used, including in conjunction with any other product and the type of surfaces to, and the manner in which, the product will be applied. Our responsibility for products sold is subject to our standard terms and conditions of sale. Gripset Industries does not accept any liability either directly or indirectly for any losses suffered in connection with the use or application of the product whether or not in accordance with any advice, specification, recommendation or information given by it.