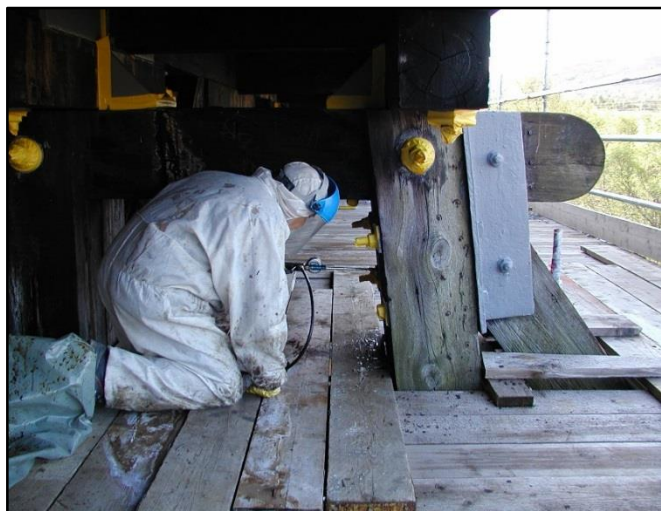


NATURAL TIMBER PROTECTOR – insecticide and fungicide free

www.gripset.com

TECHNICAL DATA SHEET

techenquiries@gripset.com



Uses

- * Protective coating over indoor timber surfaces, such as roof beams, poles, structural joists, exposed wood framing etc.
- * Exterior timber surfaces, exposed frames, and structural timber elements
- * Protecting timber and wood surfaces in the vicinity of elderly, people with allergies and respiratory problems, and children.
- * Protecting timber in use near animals, e.g. bees, stables, enclosures etc
- * Protecting timber in contact with storage of foods, e.g. timber crates, pallets, organic farming surfaces, timber tables
- * Timber decking undersides exposed to humidity, moisture, insects etc
- * External timber structures and furniture
- * Treatment of timber and wood surfaces affected by parasite, insect and fungus infestation
- * Wood stabilisation and solidification – WB2 replaces lost wood pulp in timber that has become weak and unsound, aiding in the prevention of demolition and restoration.
- * Treatment of fruit tree outer surfaces with mould and decay problems.

Surface Preparation

Ensure all loose damaged timber is removed. Surfaces to be treated are to be free of dust, grease, dirt, foreign matter and organic growth. Existing paints, stains and oils should be removed and sanded allowing Gripset WB2 to penetrate into the timber to enable the natural protective and restoration process. WB2 can be applied on timber that is slightly damp, but surfaces must be free of water and not contain excessive moisture. Optimum application is for WB2 to be applied on a dried timber surface.

Coverage

- * General coverage is 1Lt/5m²
- * Fire protection, best results achieved using Gripset WB1 in a 1 coat application, followed by 2 coats of WB2.
- * Treatment of beetle, borer infestation, e.g. House Longhorn beetle:
Food duct saturation - Inject WB2 into the open food ducts with the aid of an injection syringe and a long cannula
Drill hole saturation – drill holes of 3mm diameter approx. 15cm apart and proceed to inject. Essential WB2 reaches the infestation
- * WB2 can be applied using a brush, roller, airless spray or dipping.
- * Always mix well before using
- * Surface texture and porosity/density may affect coverage. Applying additional coats of WB2 will not have any negative effects on timber.

Drying Times

Re- Coat time2 hours
Application of paints stains or oils (if applicable).....best 7 days

Note: Drying times will vary depending on porosity of timber, type of timber and surrounding environment. Timber requiring additional sealing and wet protection should be treated approx. 7 days after WB2 or WB1 is applied



Description

Gripset WB2 is a unique natural concentrate designed for use over timber and wood surfaces to protect against parasite and fungus infestation, enabling timber to be protected and perform as intended by nature. As per the WB1 product, WB2 in its more concentrated form provides a compound that makes wood unrecognisable to insects and fungi without the use of toxins, chemicals and hazardous materials. This unique standalone technology provides a wood preservative that allows for the future existence of insects and fungi to play their role in the nature cycle, while ensuring wood is not destroyed or affected by the formation of fungus and parasites.

Based on the philosophy of acknowledging the interdependency and interconnectedness of nature, WB2 provides a wood preservative that avoids the dangers of chemical based substances, preserving timber in the most natural of processes. Composed of mineral and plant resources, WB2 works by an advanced active principle where nutrients that insects are in search of are eliminated around the peripheral surface, remaining only within the integral areas of timber at penetration depth. The treated wood no longer becomes recognisable as a food source to parasites, as the immediate parasite fighting effect lies in the way WB2 fills out the food ducts and immobilises the insects once they come into contact with it.

Features & Benefits

- * 100% natural, free of chemicals, biocides, insecticides and fungicides
- * Protects wood against parasite and fungus infestation, insects and fire
- * In the event of fire, protects wood from fire expansion and smoke development.
- * Provides an immediate effect for timber with existing cases of infestation from insects and fungus
- * Restores timber strength
- * Reverses timber rot deterioration process
- * No shelf life limitations
- * Can be finished over with paints, stains and oils
- * Blocking effect against pollutant emissions
Emission of toxic biocides such as Lindan from wood components can be reduced by using Gripset WB2. Upon the application of WB2 in 2 coats and after 30 days drying, an emission reduction of approx. 50% of Lindan and DDT will be noted.

Application

- * Gripset WB1 is suitable for commercial, farming, industrial and residential applications.

NATURAL TIMBER PROTECTOR – insecticide and fungicide free

www.gripset.com

TECHNICAL DATA SHEET

techenquiries@gripset.com



Packaging

- * 5 & 15litre pails. Bulk supply available

Precautions

- * Gripset WB1 will not enable non-structural supporting timber to become structurally supporting.
- * Optimum performance is the restoration of the original strength of the timber surface
- * Do not apply to exterior surfaces when rain is imminent, best applied when the area will be free of rain for a minimum 24 hours
- * Do not apply when surface temperature is below 0°C and above 40°C
- * Timber surfaces will appear stained and a wet look in the initial period of the process taking place. Exposed timber will lose the wet/gloss appearance after approx.14 days (dependent on weather conditions) before returning to a more natural appearance. Indoor timber will retain this appearance for 30-60 days but could be up to 6 months depending on the type of timber.
- * For treating timber rot, there will be an ongoing change of the timber appearance in the first month while the natural restoration process takes place
- * Mild temporary discolouration may occur on some timbers, this will only be temporary while the WB2 repair process takes place
- * Oak woods and similar timber will be discoloured by WB2 treatment and can take up to 6 months for this to return to its natural appearance.
- * Light timber surfaces will appear with a slight "pine coloured" seal effect.
- * Timber will look deeper in colour after the application.
- * Ensure any spillage or wet residues onto metals, glazed surfaces or plastics are immediately removed with a damp cloth/wipe to prevent staining.
- * Wear gloves and safety glasses before use. The WB2 is natural but is alkaline in nature while in a wet state (as per soaps and soda products), becomes neutral when dry. If in contact with eyes, flush immediately.
- * Wash any exposed skin that comes into contact with WB2.
- * Clean tools, brushes, rollers etc with water immediately after use.
- * Product may appear separated after settlement inside packaging. Stir contents well and apply.

Tips

- * Before commencing, the product should be tested on a typical area or surface to check appearance and application.
- * Before using any brushes or rollers, ensure they are dry and do not contain residues from paints, sealers or varnishes.
- * Application tools must be free of any other coatings or residues as these materials will negatively affect Gripset WB2's performance.
- * For optimum natural eco-friendly finish, linseed oil based paints and stains are recommended.
- * In the cases of severe and deep infestation of parasites, fungi, apply WB2 in 2 coats as a total after treatment coating once the injection process has been completed.
- * Treated wooden parts should not come in contact while drying as they will adhere together. Keep separate during the drying process.
- * When not in use, ensure lid is properly closed to prevent drying out.

WB2 has no shelf life and can be stored infinitely, best stored indoors.

Notes

- * As WB2 is made from natural components using a patented process, the penetration of WB2 into the wood damaging fungi has immediate affect through its natural alkaline nature reacting with the typically acidic fungus organism. In the drying and subsequent crystallisation stage, fungi are destroyed through the mechanical destruction of the cellular structure.
- * This may result after a few weeks in a typical whitish surface appearing on the wood surface which is a sign of the crystallisation process, reflecting the effectiveness of the treatment. This crystalline appearance can remain and dissipate naturally over time, however if intended to be removed earlier, use a spatula, grinder or blade to cut away. Oils, such as crude or boiled linseed oil, or wax applied over the crystalline affect may also cause this to remove naturally.
- * If applying stains, paints or sealers over the WB2 surface, it is recommended to test a small area and monitor over 48 hours to check for any adverse reactions to the desired finish before treating the total area.
- * It is recommended before commencing the application; that adhesion of products to be used (e.g. primers, membranes, coatings adhesives etc) is tested over a typical area of the prepared surface to ensure satisfactory adhesion. It is the responsibility of the applicator to carry this out and accept the substrate suitability before any application starts. Gripset Industries offers a service for pre testing adhesion to surfaces for large commercial areas or unusual substrates. For further details contact Gripset Industries.
- * Details contained in product data sheets are general. For any situation or items not covered in this data sheet, it is the responsibility of the applicator to check with Gripset Technical Services before commencing the application. A written confirmation will then be issued by Gripset Technical Services

Gripset Industries Pty Ltd

ABN: 64 137 930 093

Telephone: +61 (8) 8124-7300 or 1800 650 435

Email: techenquiries@gripset.com

Website: www.gripset.com

Product Disclaimer

This Product Data Sheet (PDS) summarises our best knowledge of the product, including how to use and apply the product based on the information available at the time. You should read this PDS carefully and consider the information in the context of how the product will be used, including in conjunction with any other product and the type of surfaces to, and the manner in which, the product will be applied. Our responsibility for products sold is subject to our standard terms and conditions of sale. Gripset Industries does not accept any liability either directly or indirectly for any losses suffered in connection with the use or application of the product whether or not in accordance with any advice, specification, recommendation or information given by it.